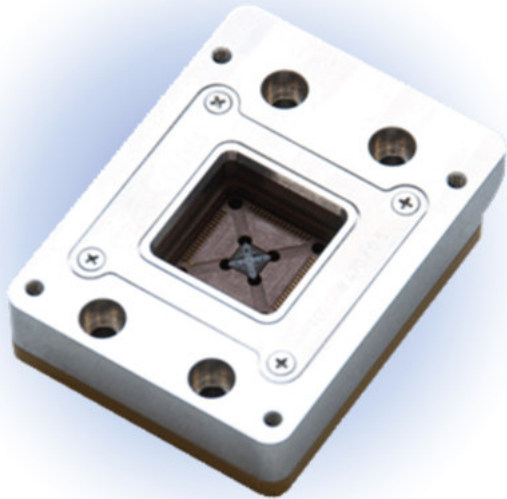
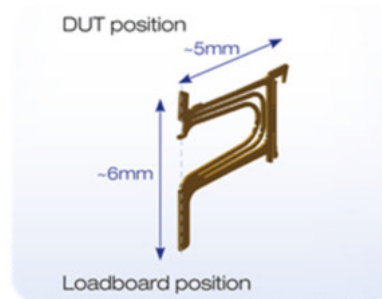


cHAWK CONTACTOR

Ideal for Testing SO, QFP and QFN Devices



Footprint Compatibility with Most Existing Spring Probe Loadboards



High Productivity:

- Long cleaning interval
- Easy single pin replacement
- Long lifetime by proprietary Denmark Alloy pin material

Key Features:

- Revolutionary homogenous multi-beam spring & small form factor design
- Outstanding CRES stability by defined scrub
- Ideal for high parallel testing due to small contact pitch
- Smallest pitch 0.30 mm
- Static connection to load board
- Low self inductance ~3.5 nH
- Insertion loss ~8.6 GHz
- Best temperature accuracy by multi-beam architecture



— Available for all ATE handler platforms —

cHAWK CONTACTOR

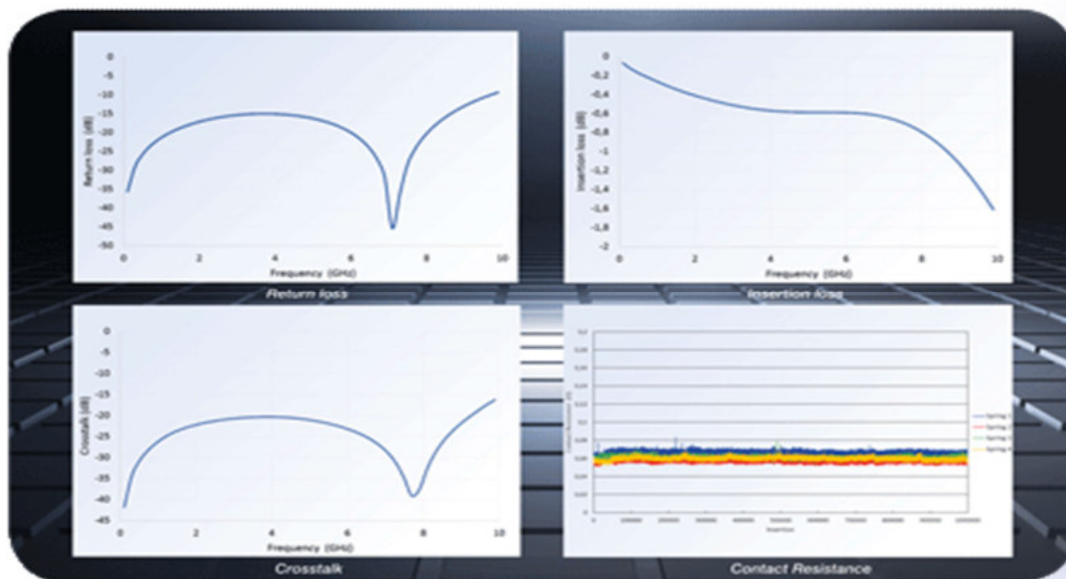
1. Electrical Specifications

- 1.1 CRES average
 - 60 mOhm
- 1.2 Current carrying capability ¹⁾
 - 2.2 A
- 1.3 Self Inductance ²⁾
 - 3.5 nH
- 1.4 Capacitance GND ²⁾
 - 0.73 pF
- 1.5 Insertion Loss S₂₁ ²⁾
 - -1 dB @ 8.6 GHz

2. Mechanical Specifications

- 2.1 Compressed Contact Height
 - 5.6 mm
- 2.2 Contact Force Pure Tin
 - 40 grams
- 2.3 Contact Force (NiPdAu)
 - 25 grams
- 2.4 Minimum Pitch
 - 0.30 mm
- 2.5 Contact Compliance
 - 200 μ m
- 2.6 Temperature Range
 - -60 °C to +175 °C
- 2.7 Pin Material
 - Proprietary Denmark Alloy
- 2.8 Pin Plating
 - Hard Gold
- 2.9 Housing Material
 - Torlon 5030
- 2.10 Pin Lifetime
 - 1.000.000 (typical)
- 2.11 Cleaning Interval
 - > 100.000 (typical)

¹⁾PER ISMI # 09075021A-TR ²⁾Results for 0.5 mm pitch



All performance figures such as MTBF, MTBA, Uptime, Yield, Jam Rate, Life Span, Cleaning Cycles etc. can vary with specific package type, test program and / or specific application environment. They assume that only original Cohu spare and consumable parts are used, recommended maintenance intervals and procedures are respected, operators/maintenance technicians have successfully participated in formal equipment training by Cohu to the appropriate level, and only Cohu approved software is used on the systems. Cohu assumes no warranty or liability if any of these requirements is not met. All listed data are for information only. For binding specification please contact your sales person.

